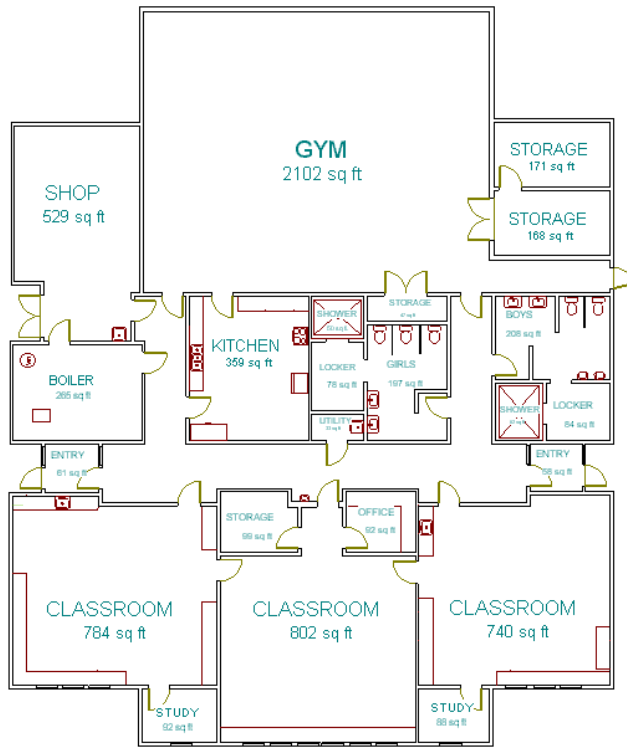


MDF
Data port
WAP
Security/Intercom

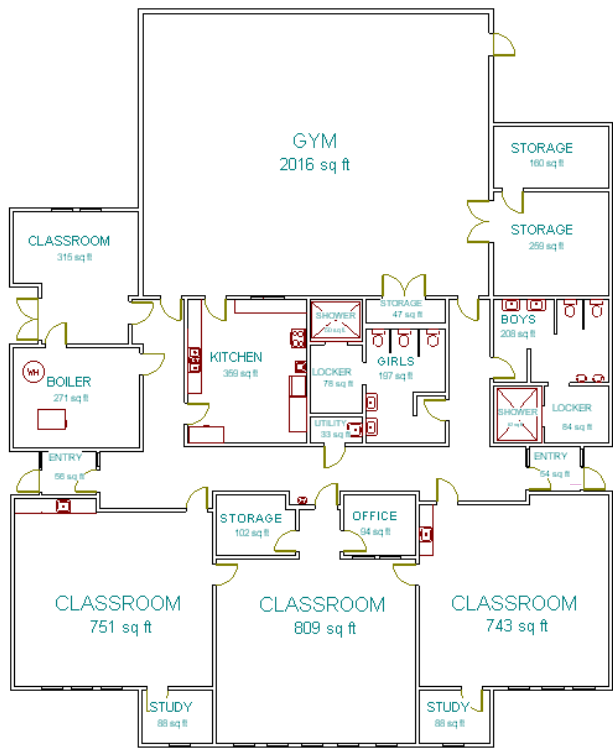
All Rural schools are cabled through the crawlspaces below the school.

Counts for each data port is 2 ports per drop.



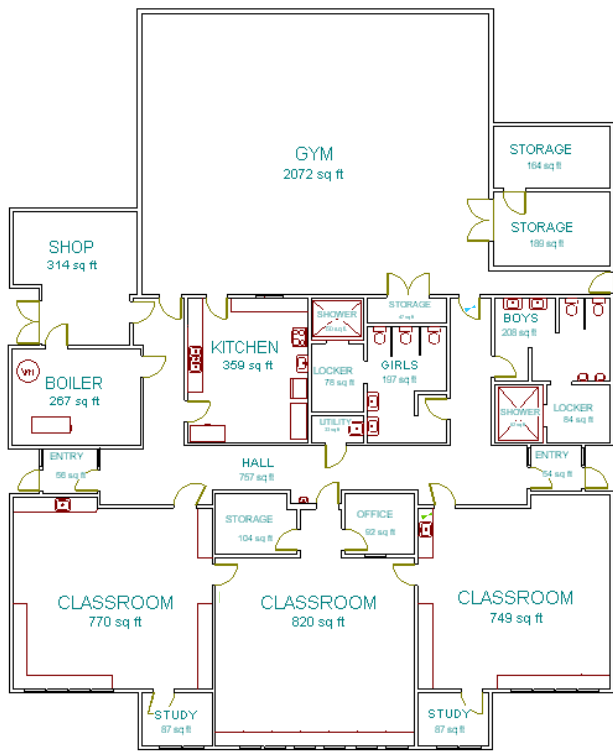
AKHIOK SCHOOL

TOTAL AREA: 7,769 SQ.FT.
 INST. AREA: 5,139 SQ.FT.



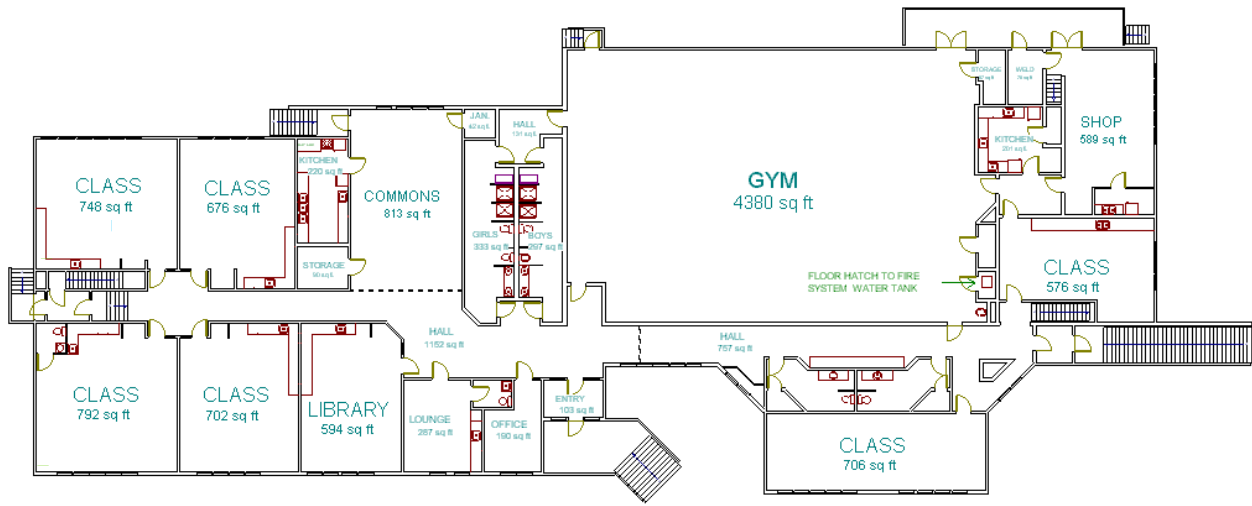
CHINIAC SCHOOL

Total Area: 7682 Sq. Ft.
 Total Instructional Space:
 5164 Sq. Ft.



KARLUK SCHOOL

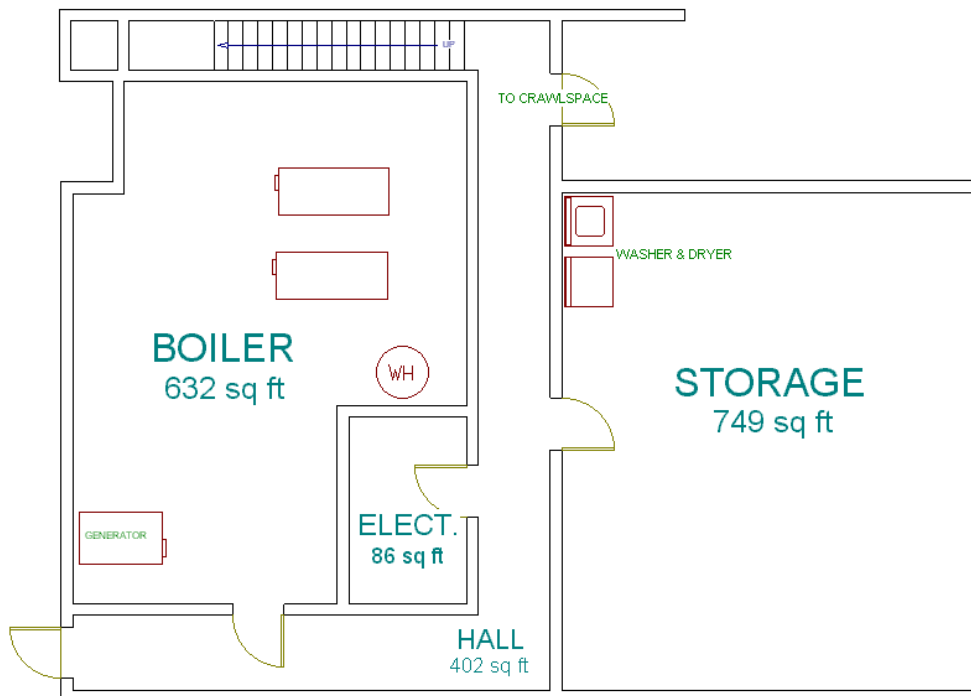
TOTAL AREA: 7,522 SQ. FT.
 INST. AREA: 5,823 SQ. FT.



LARSEN BAY SCHOOL Main Floor

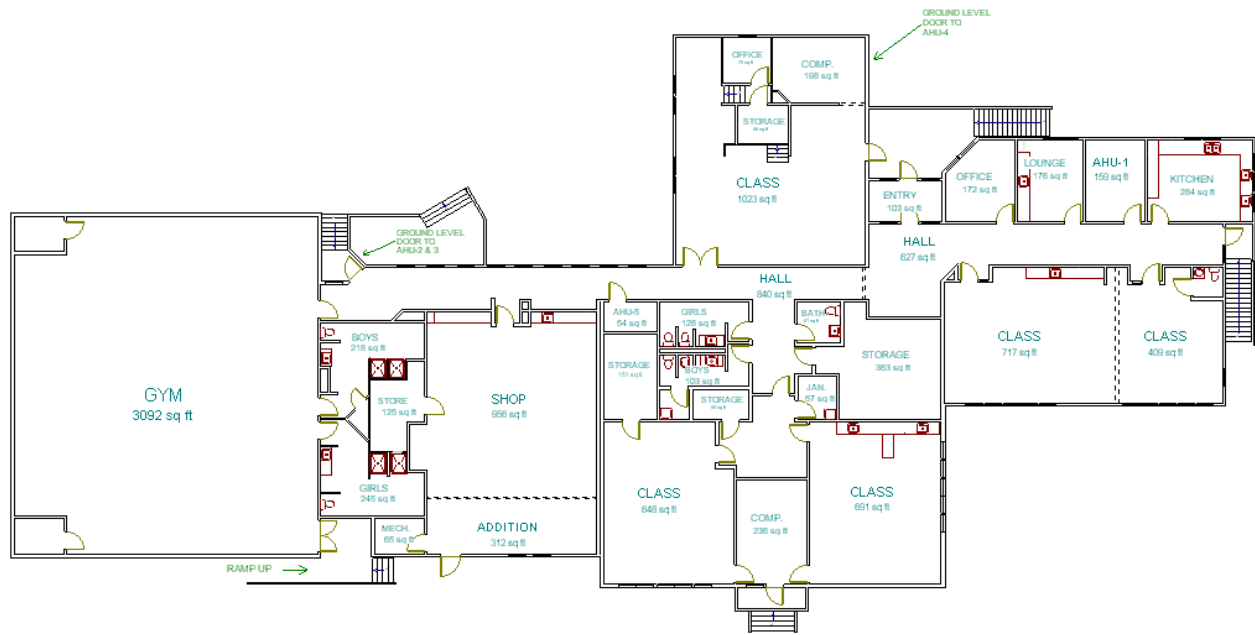
INST. AREA: 11,235 SQ. FT.

TOTAL AREA: 15,576 SQ. FT.



LARSEN BAY
LIVING AREA

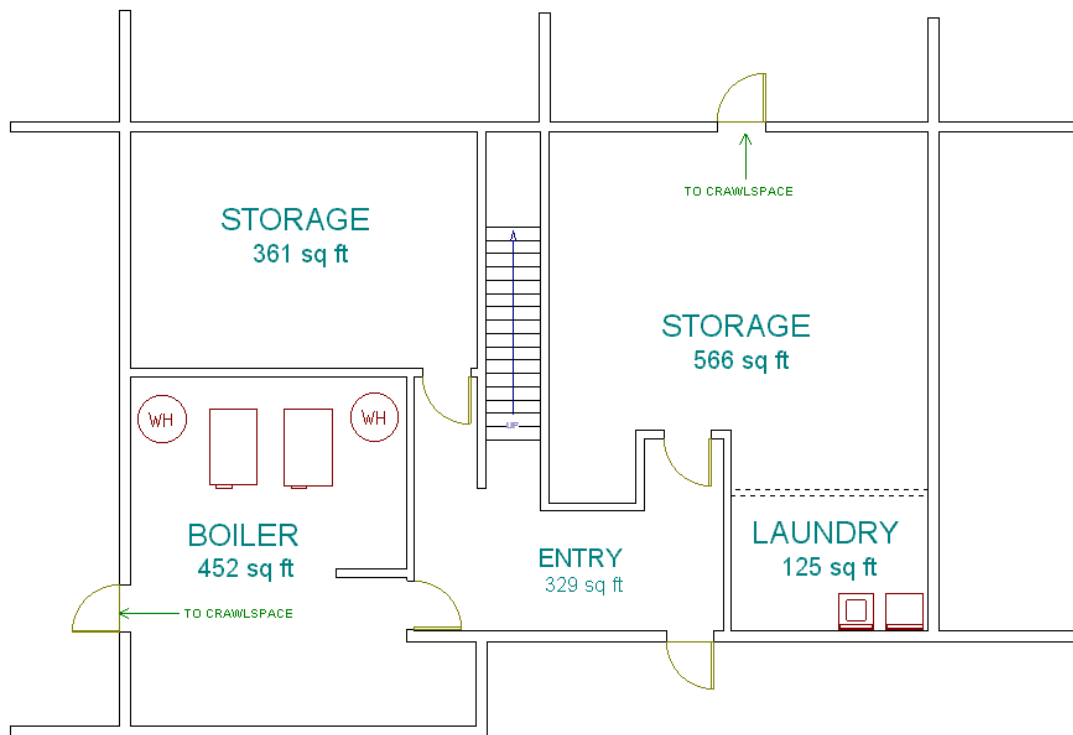
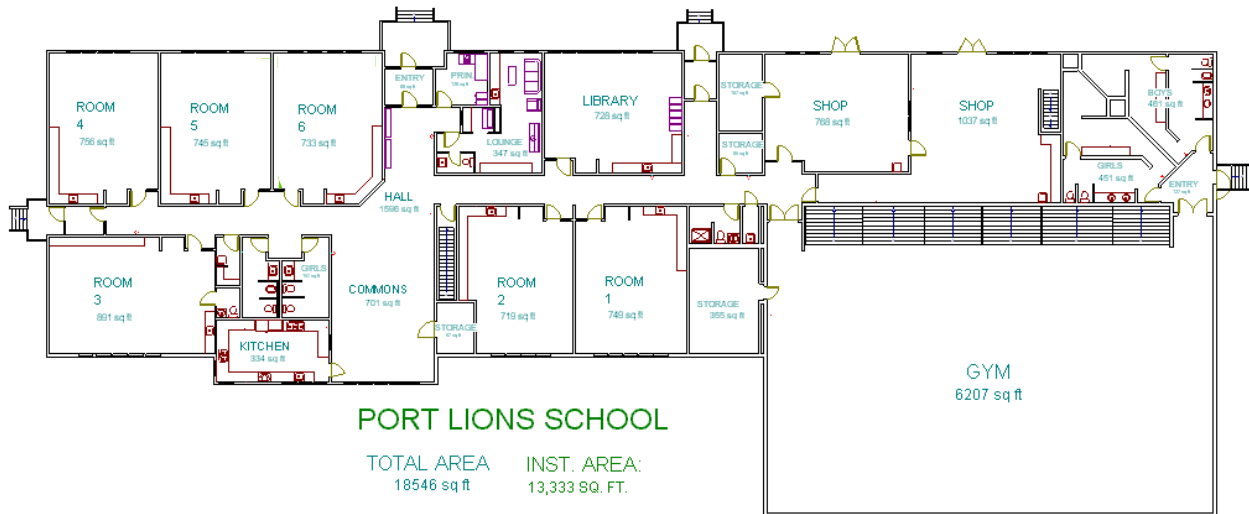
BASEMENT AREA 1889 SQ. FT.



OUZINKIE SCHOOL

TOTAL AREA: 12,066 SQ. FT.

INST. AREA: 8,575 SQ. FT.



PORT LIONS SCHOOL
 BASEMENT AREA
 TOTAL AREA: 1871 sq ft